

Hergestellt für:

easyfurn GmbH

www.easyfurn.de

98547

Modellname / Model name / Nom du modèle / Modellnamn
 Nome modello / Název modelu / Modelnaam / Ime modela
 Numéro Modelo / Modell neve / Название модели /
 Názov modelu / Ime modela / Denumire model /
 Наименование на модели

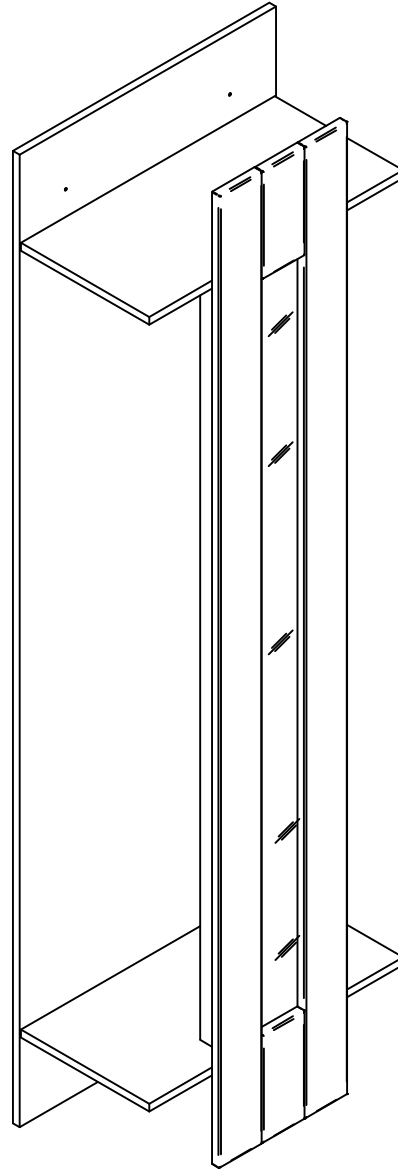
Vancouver

Modellnummer / Number / Numéro du modèle
 Numero / Hoáid nř èodílnř / modello
 Číslo modelu / Modell száma / Éíslo modelu
 Stevilka modela / Număr model

W9.413.07



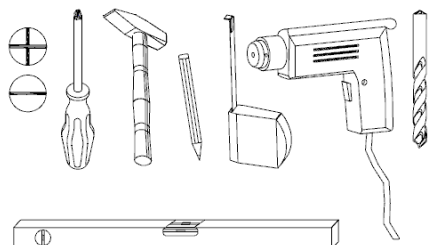
- D** Bitte lesen Sie diese Montageanleitung gut durch, da wir für Fehler, die durch falsche Montage entstehen, keine Haftung übernehmen!
- GB** Please read these installation instructions through carefully as we cannot accept any liability for faults occurring as a result of incorrect installation!
- CZ** Přečtěte si prosím pozorně tento návod k montáži, aby jste předešli chybám vzniklých špatnou montáží, za které neručíme!
- F** Veuillez lire attentivement cette notice de montage, car nous déclinons toute responsabilité en cas d'erreurs découlant d'un montage erroné !
- I** Prego leggere attentamente le istruzioni per il montaggio, poiché decliniamo qualsiasi responsabilità per difetti derivanti da un montaggio errato
- BG** Ёол, ддоочлнлнл внчддлнлно ёонннчнчл чнннндуецд, ннй ернл нл нолчд ёнлководннл зл улнч, взнчдннлч в нллдннвчл нл доддлрлн ёонннч.
- NL** Leest u alstublieft deze montagehandleiding goed door, voor fouten door verkeerde montage zijn wij niet verantwoordelijk.
- PL** Proszę uważnie zapoznać się z instrukcją montażu, ponieważ nie ponosimy odpowiedzialności za niewłaściwy montaż.
- HR** Molimo vas da pažljivo prcitate uputstva za satavljanje, jer ne snosimo odgovornost za pogreske nastale zbog ne odgovarajućeg sastavljanja.
- HU** Kérjük, olvassa el figyelmesen ezt az összeszerelési útmutatót, mert a helytelen összeszerelésből a dádó hibákért nem vállalunk felelősséget!
- SK** Prosíme, dobre prečítajte si tento návod na montáž, pretože nepreberáme žiadne ručenie za chyby, ktoré vzniknú na základe chybnej montáže!
- SLO** Preberite ta navodila za montažo, ker mi ne prevzemamo odgovornosti za napake, ki nastanejo kot posledica napacne montaže!
- RO** Vă rugăm să citiți cu atenție aceste instrucțiuni de montaj deoarece nu preluăm garanția pentru defecte ce apar datorită unui montaj incorect!
- RUS** Пожалуйста, внимательно ознакомьтесь с данной инструкцией по монтажу, поскольку мы не несем ответственности за ошибки, причиной которых является неправильный монтаж.
- S** Läs noggrant igenom dessa monteringsanvisningar. Vi övertar inget ansvar för felaktig montering!!



max. zulässige Belastungen von Einlegeböden in Kg:

Länge	Stärke			Massivholz			Spanplatte			Glas	RW
	mm	15	18	20	15	18	22	5 / 6 / 8	mit Boden		
0 ≤ 400								Länge bis 600mm / 10kg	Länge 1000mm		
401 ≤ 600	20	20	20	15	15	15		Länge bis 900mm / 5kg	max.5kg%		
601 ≤ 800				10							
801 ≤ 1000	10			5	5						

25.03.2014



festziehen / tighten / Затягивать /
 serrer / stringere utåhnut / vasttrekken /
 zategnuti/strångere / zwiázac /
 szorosan meghúzni / pevne dotiahnut /
 trdno pritegniti / затянуть / dra át



eindrücken / press in / enfoncer /
 ribattere / zatlačit / Вкарайте /
 Benyomni / silacit' / vtisniti / tryck in
 introducere prin apasare / вдавить



ausmessen / measure / mesures /
 misurare / opmeten / izmeriti / miara /
 kímérni / izmeriti / masurare / измерить
 změřit / Измерете / mät upp



drücken / press / presser / stisknout /
 HaTNCHeTe / vtisniti / nasinac / drukken /
 pritisnuti / nacinac / pritisniti / нажать /
 (Meg)nyomni / apasare / tryck fast

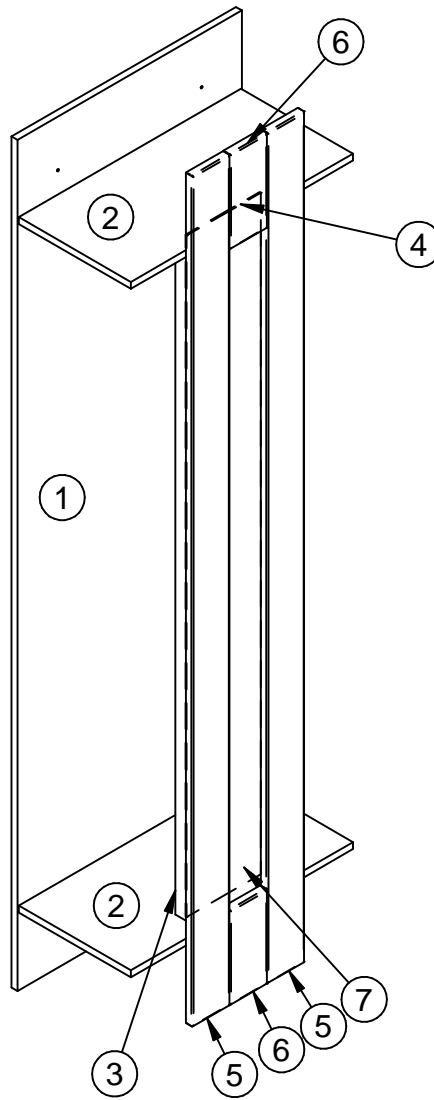


einschlagen / hammer in / bevern / sla in
 frapper au marteler / infossare / Zabit' /
 zarazit / Забийте (с чук) / zabiti /
 Introducere prin bătăie / забить



Drehen - wenden / Proszę odwrócić /
 Keren - omdraaien / Girare - Ruotare /
 Okrenuti - ubnuti / Retourner - renverser /
 Turn over - turn around / Otocte - obratite /
 Обърнете - завъртете / Obrnite list /
 Întoarceți / rotiti / Vrid runt - vänd /
 прокрутить - повернуть




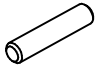
Bauteile Type: W9.413.07

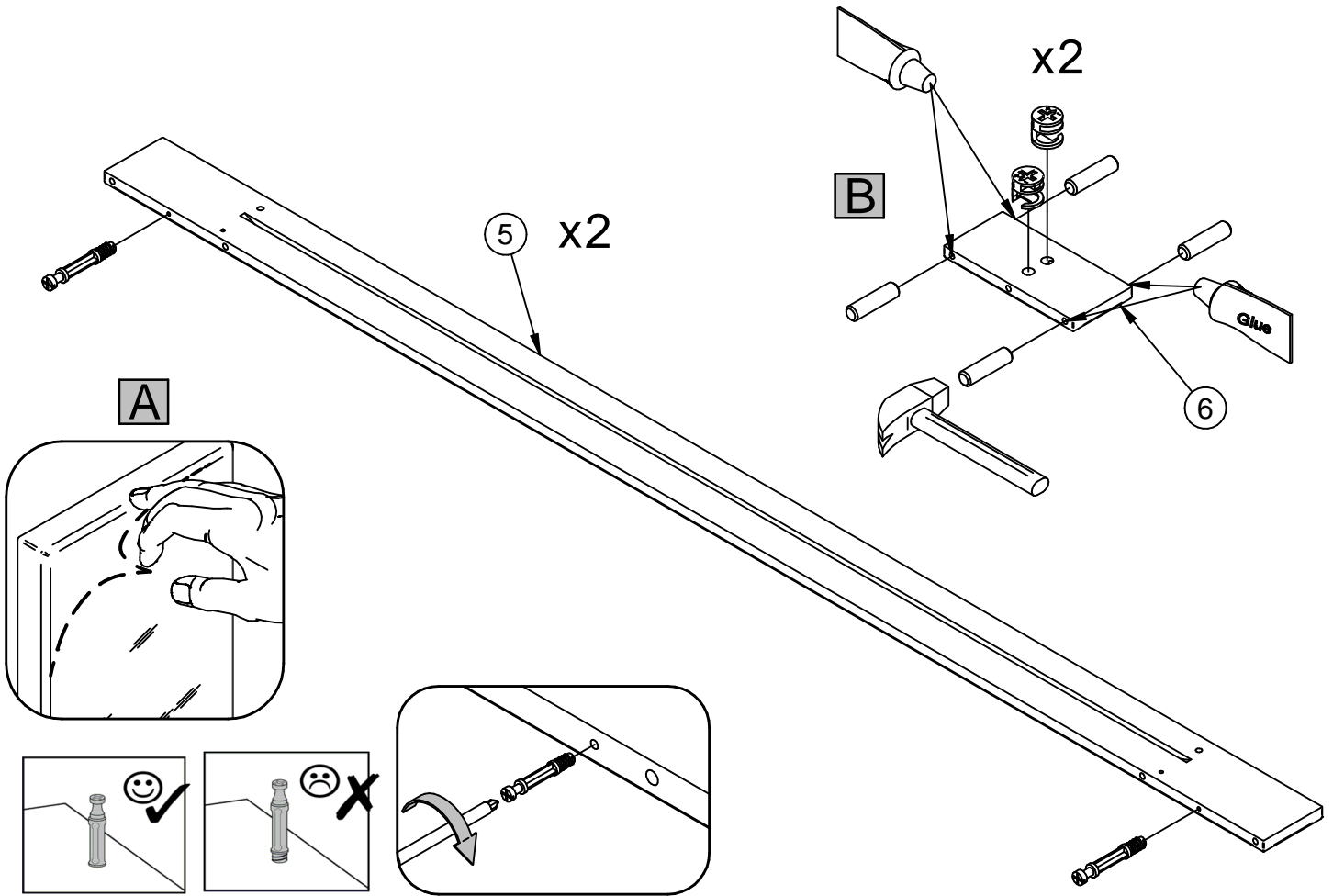
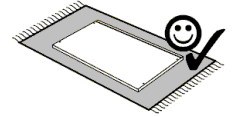


Beschlagteile Type: W9.413.07


BT1016 x8	MM1101 Ø8x40 x2	BT50114 x1	BT50244.xxx Ø20 x4	BT50825.237 L=237 x1	BT1089 x12	MM50404 M6x25 x1	MM1119 Ø4x50 x2
BT50588 x1	MM1001 Ø7,7x45 x6	MM1007 4mm x1	MM1016 11mm Silbergrau x8	MM1018 x4	MM1046 Ø3,5x13 x2	MM1121 Ø8x30 x16	BT50217.xxx Ø14 x2

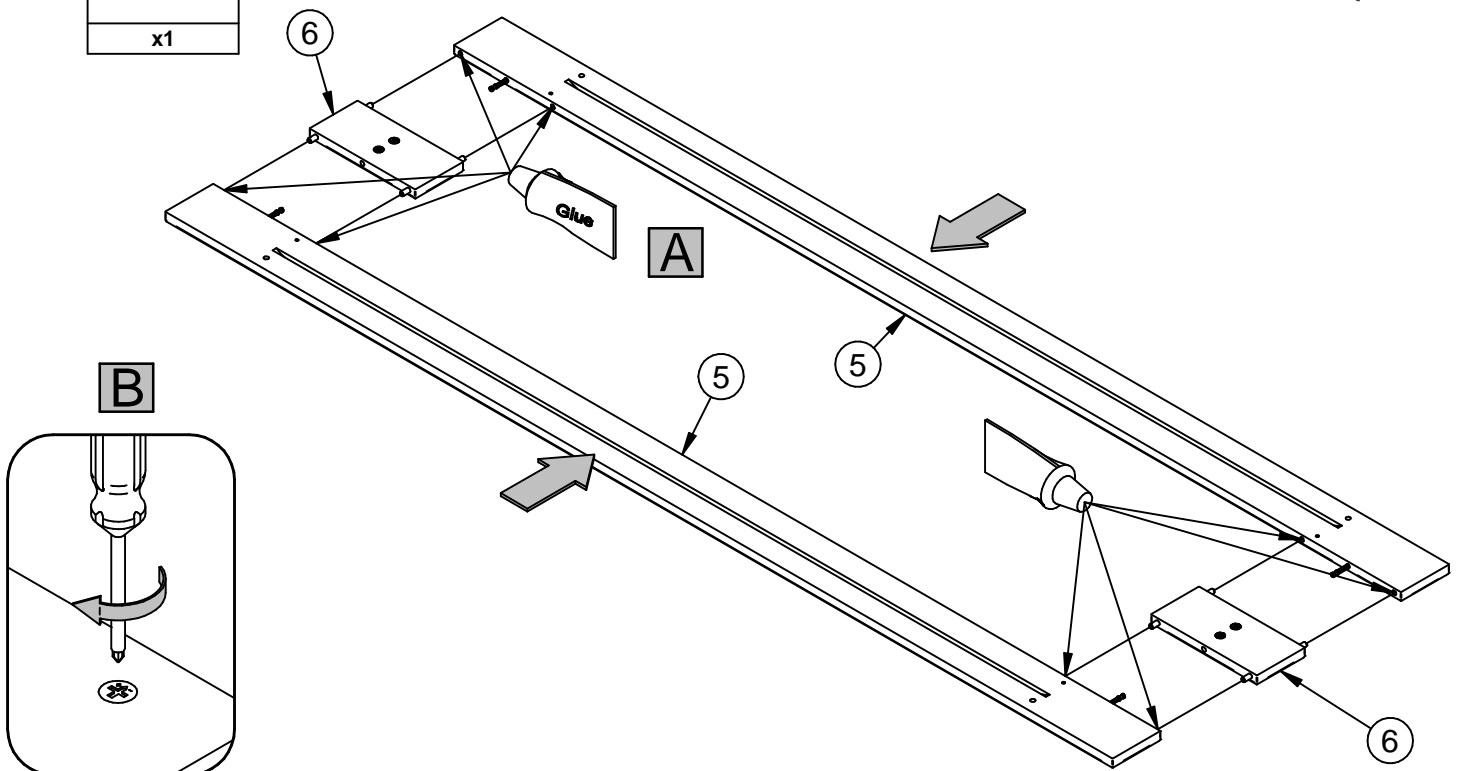
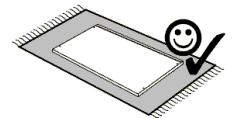
1.

MM1016  Silbergrau x4	MM1018  x1	BT1016  x4	MM1121  Ø8x30 x8
---	---	---	--





2.

MM1018  x1



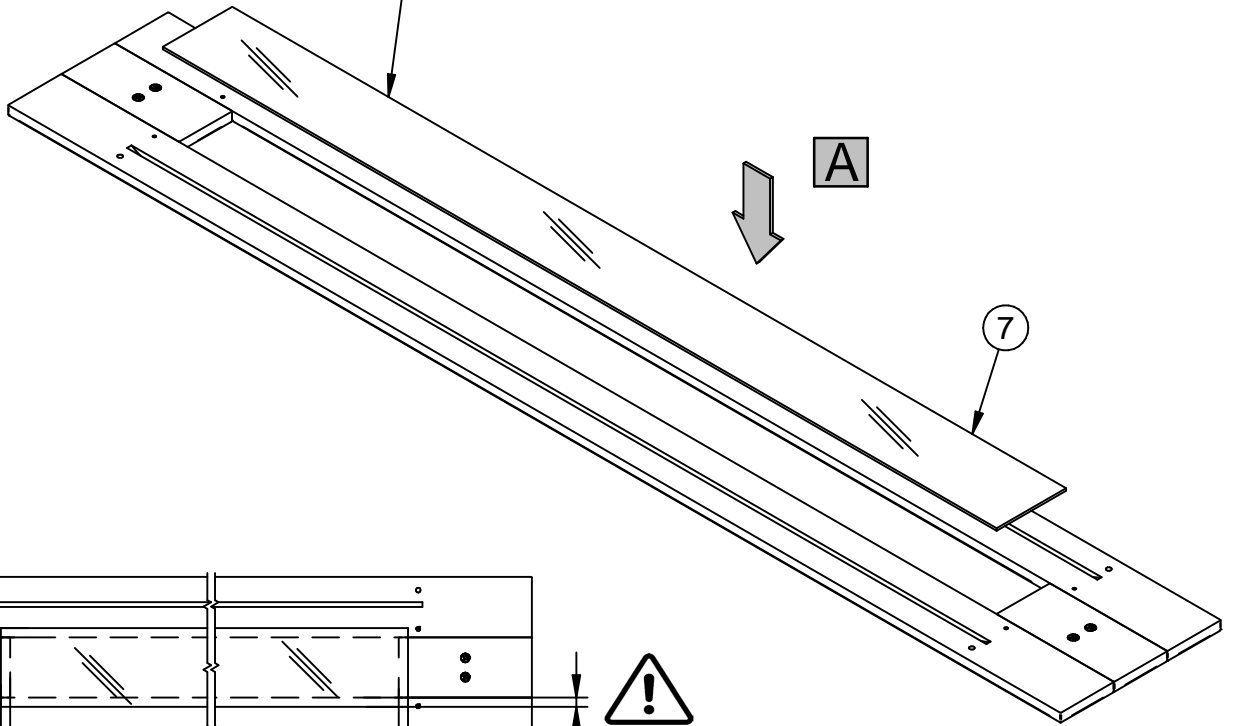
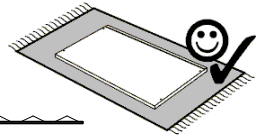
3.

BT1089	MM1016
	
x12	x4
	Silbergrau

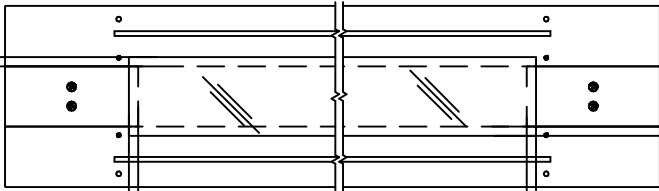


Satiniert

Glanz

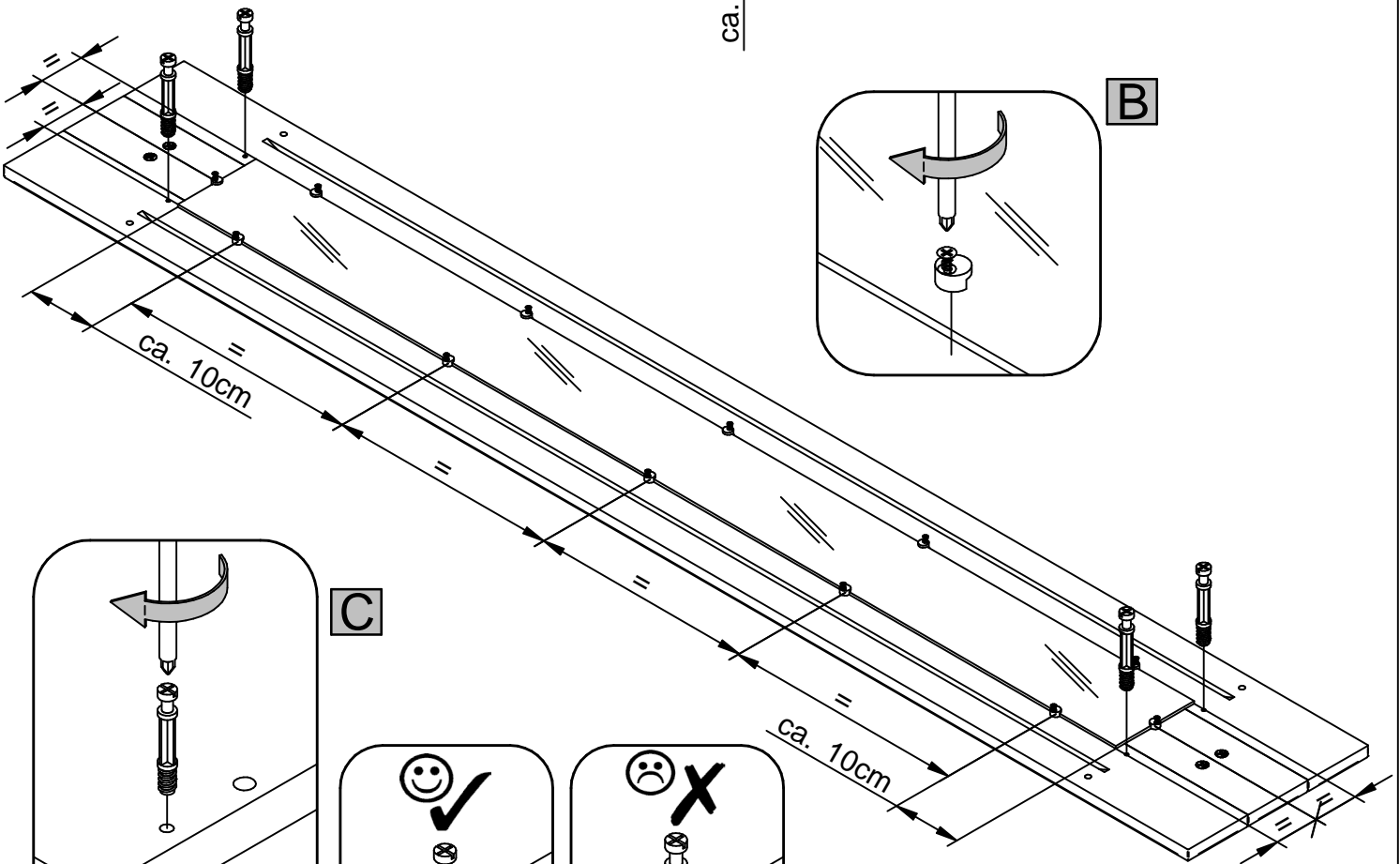


ca. 1,5cm



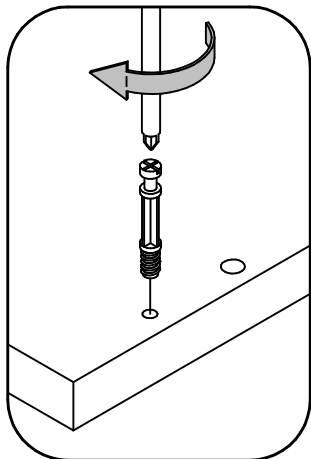
ca. 1,5cm ca. 1,5cm

ca. 1,5cm

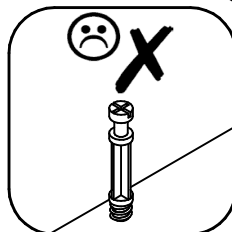
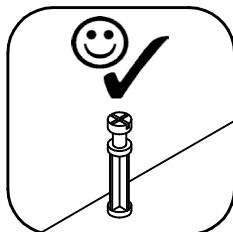


ca. 10cm



ca. 10cm

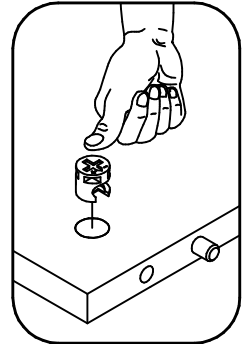
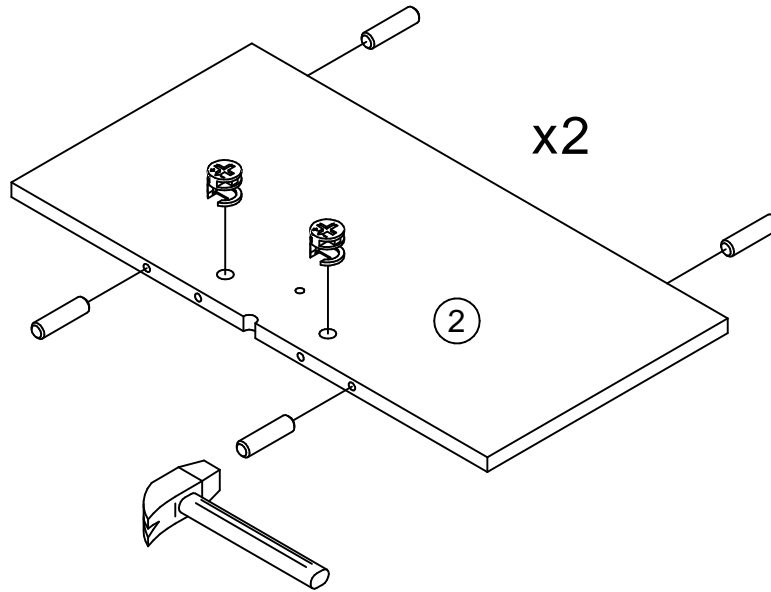
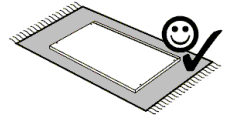


C

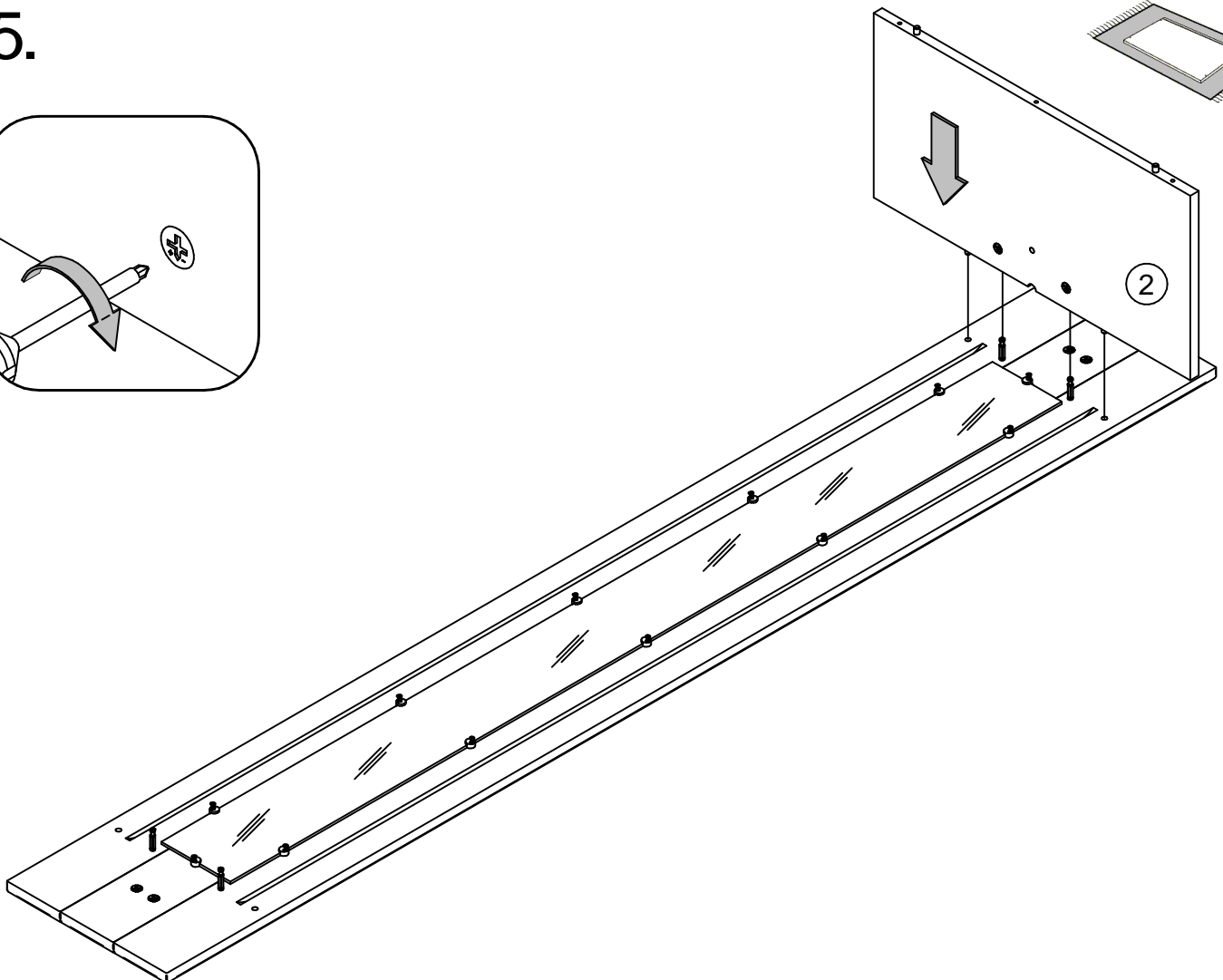
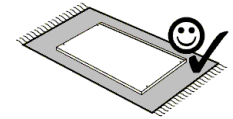
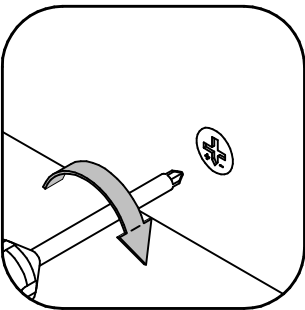


4.

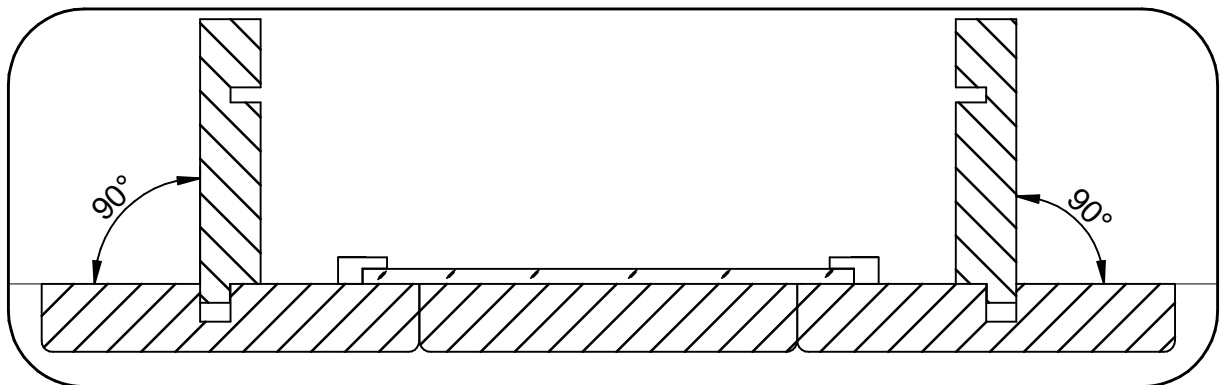
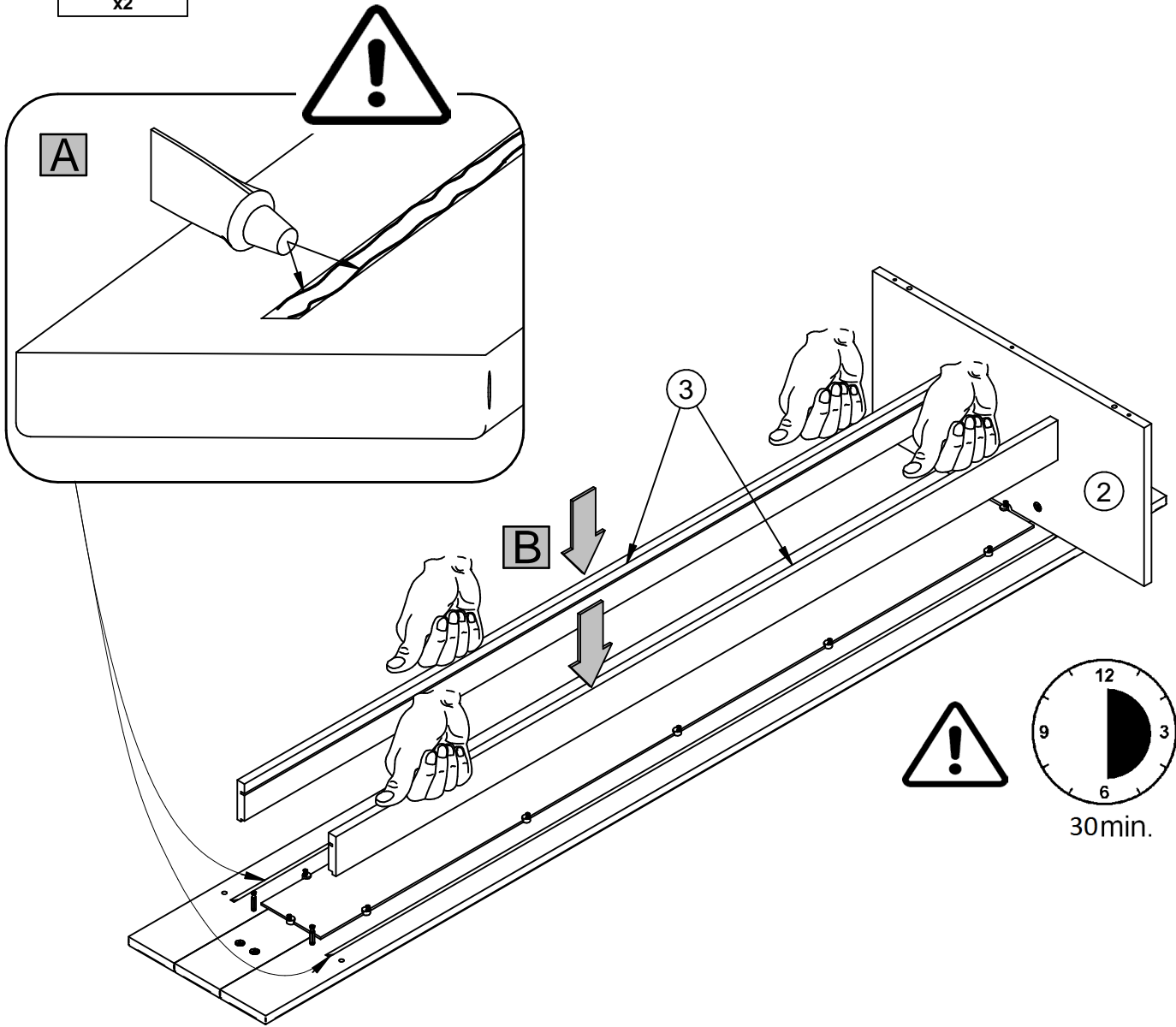
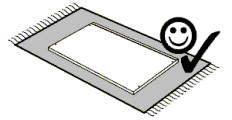
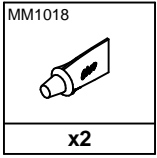
BT1016 	MM1121 
x4	x8



5.

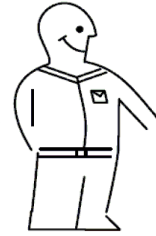
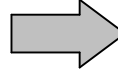
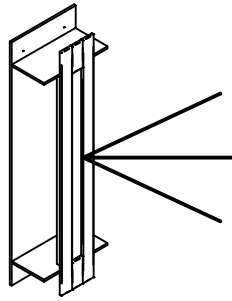


6.

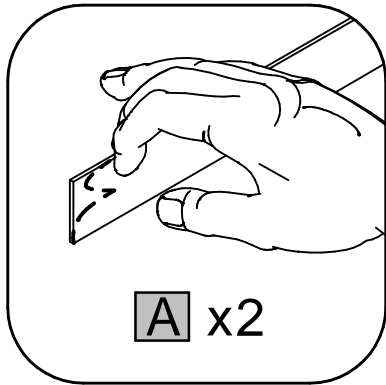


Optional Beleuchtung.

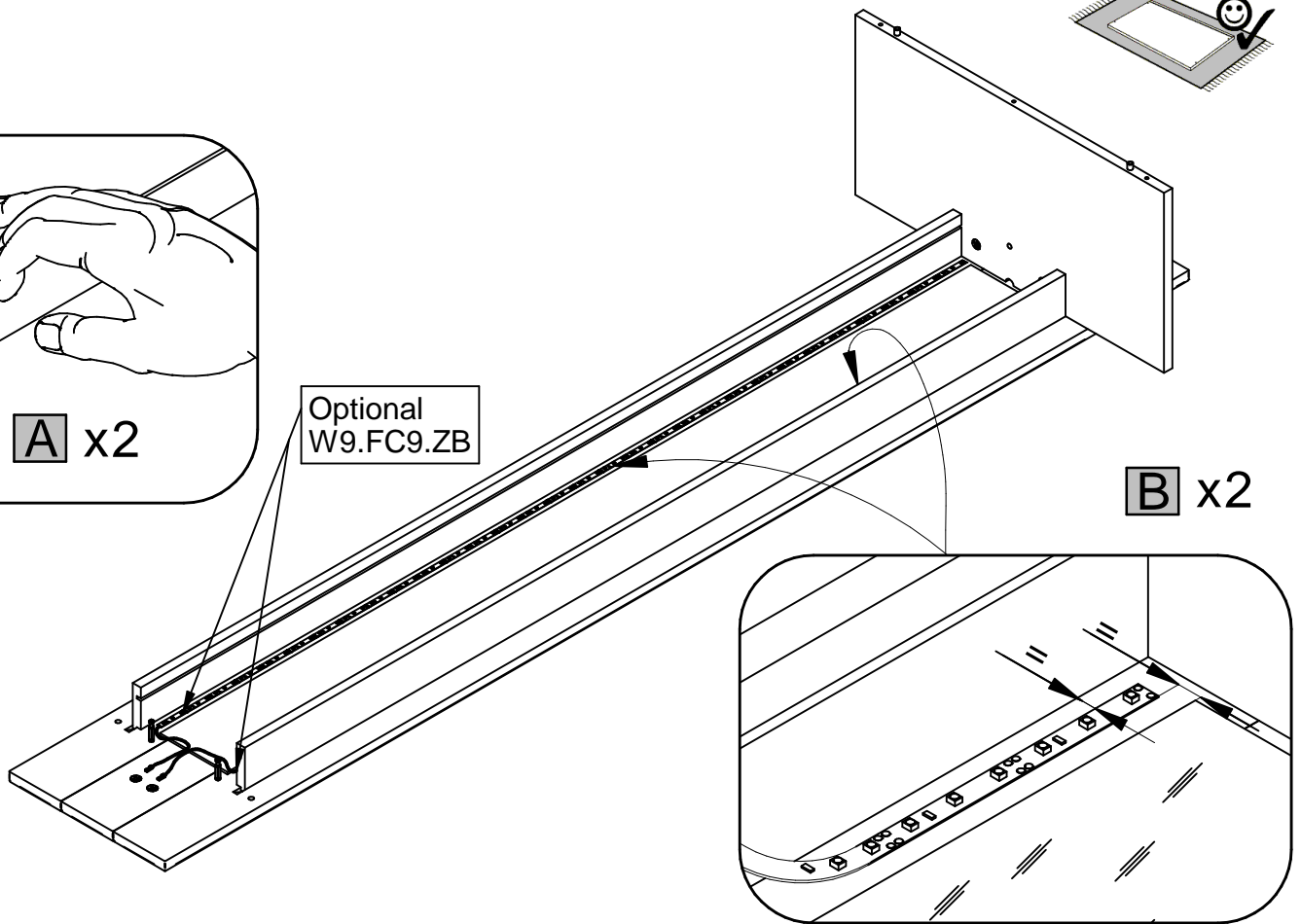
W9.FC9.ZB



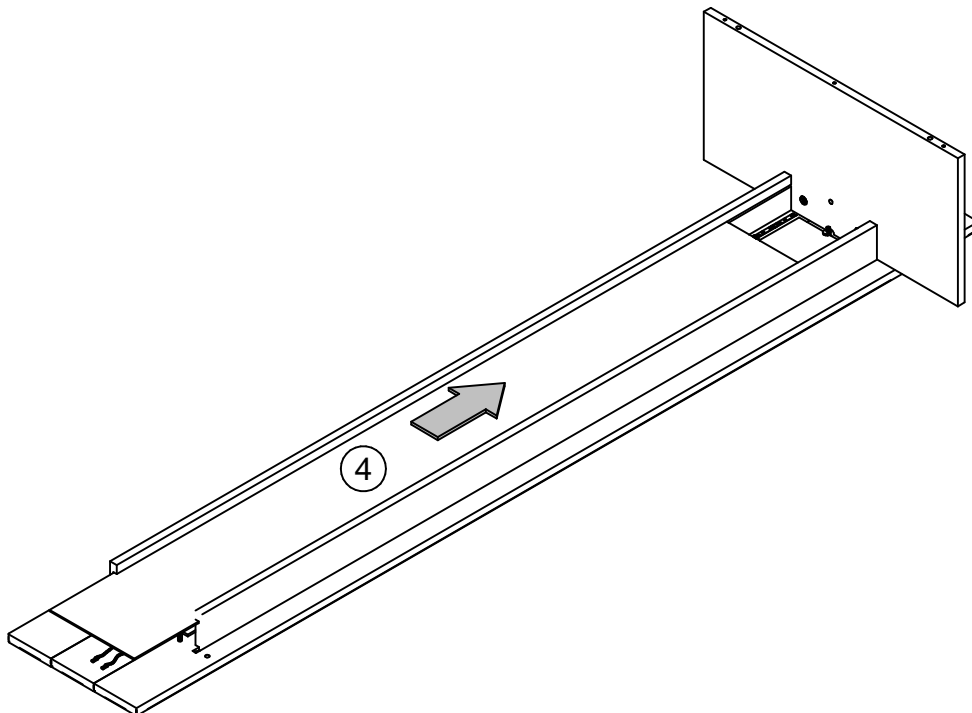
7.



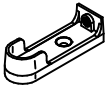

Optional
W9.FC9.ZB



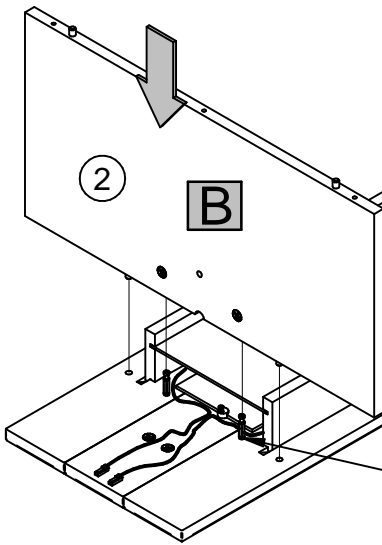
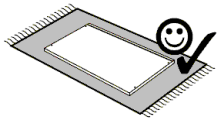
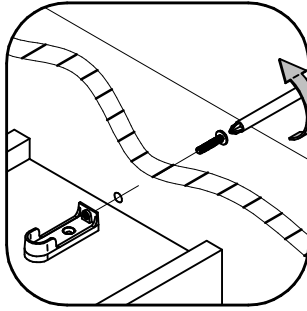
8.



9.

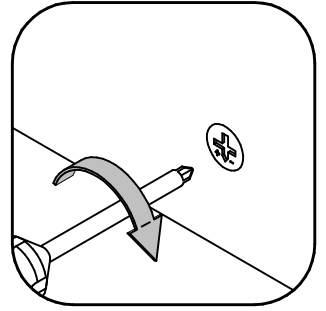
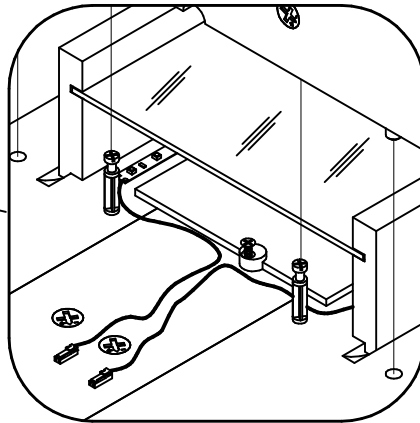
BT50588	MM50404
	
x1	x1

A

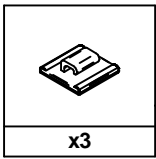


B

C



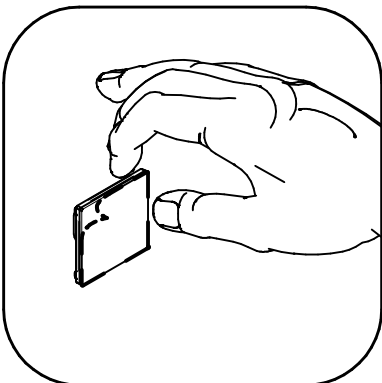
10.



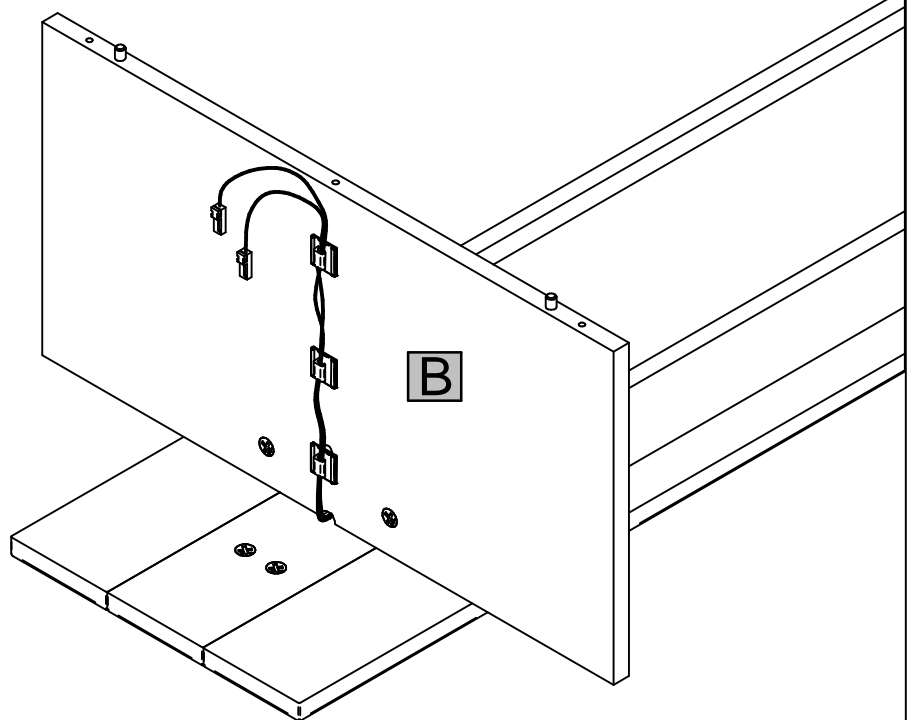
Optional
W9.FC9.ZB

x3



A



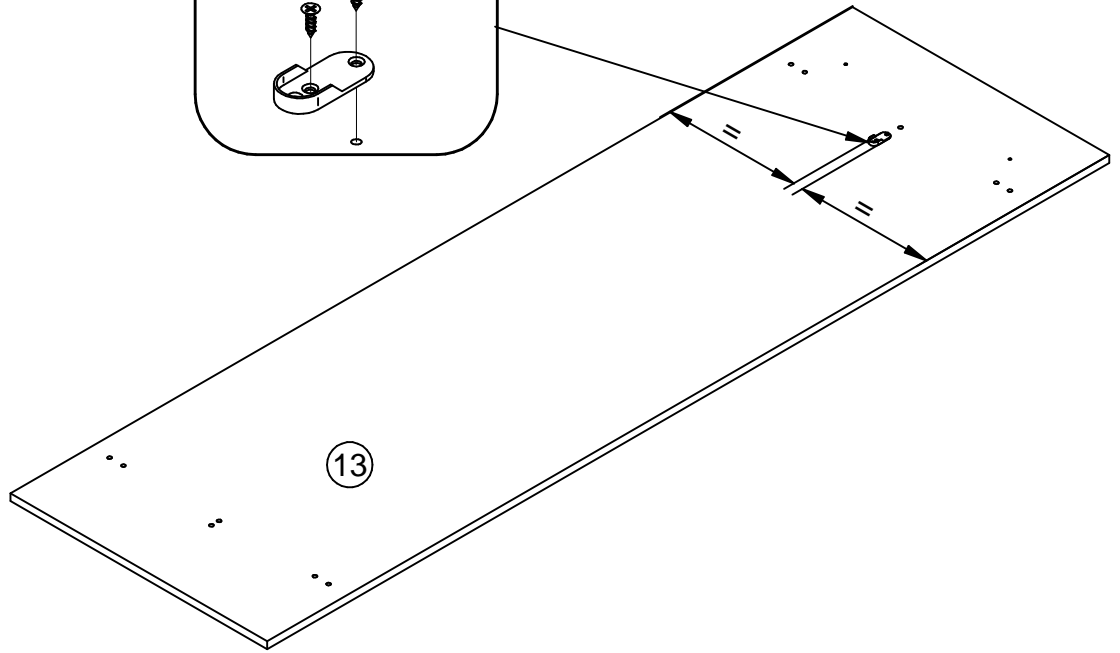
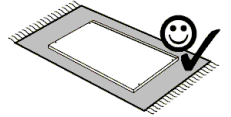
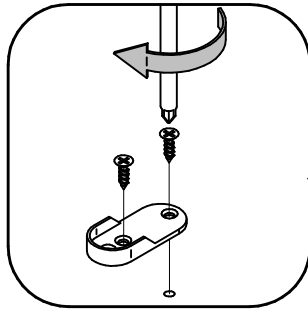
B



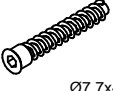


11.

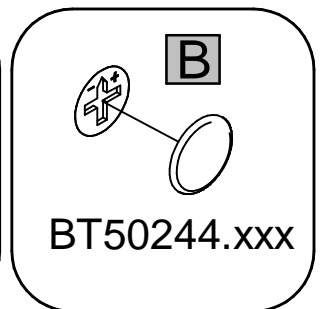
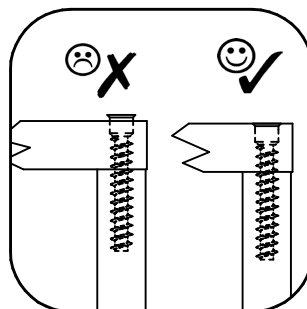
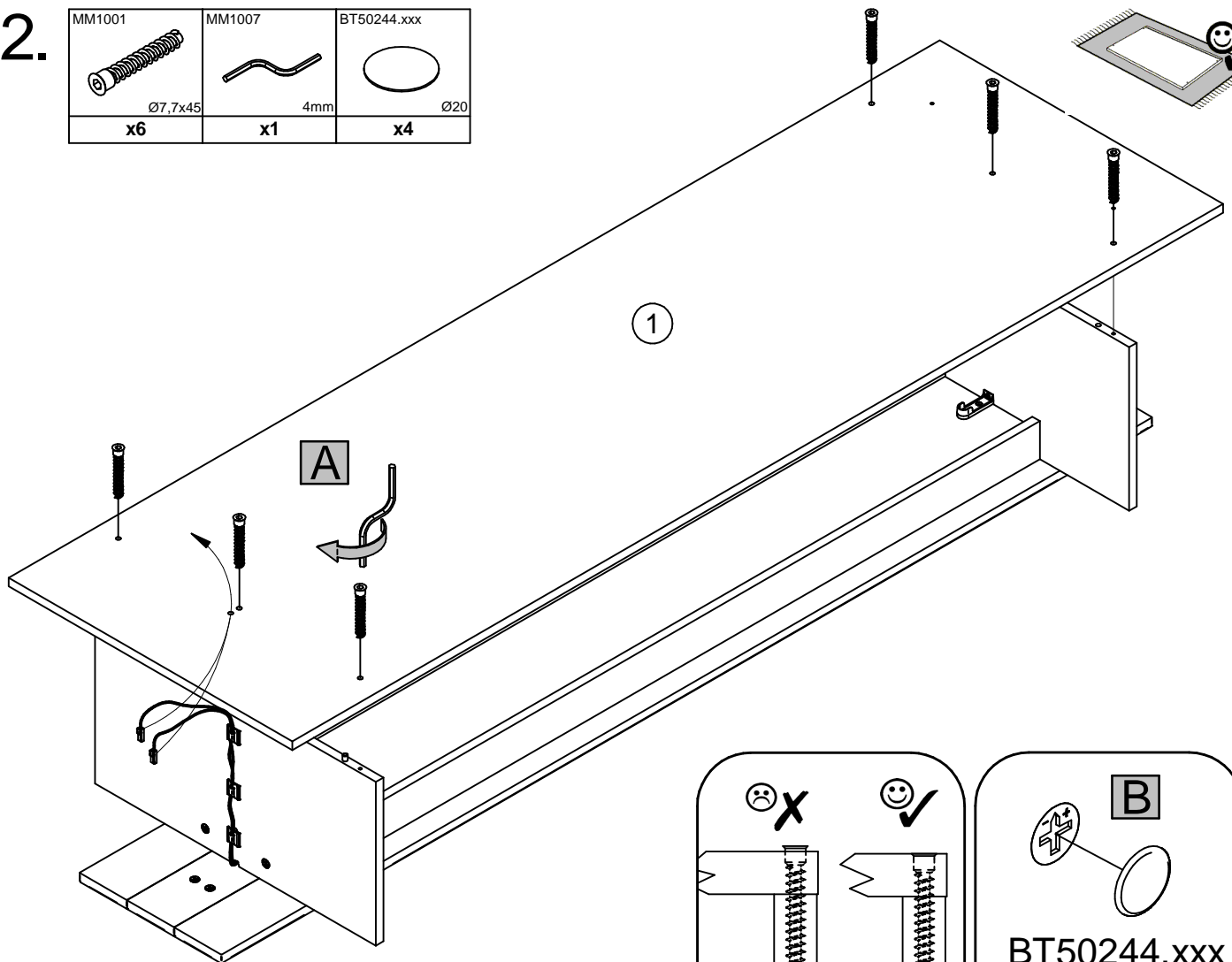
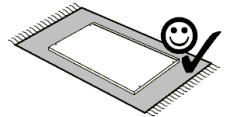
BT50114	MM1046
	
x1	x2

Ø3,5x13

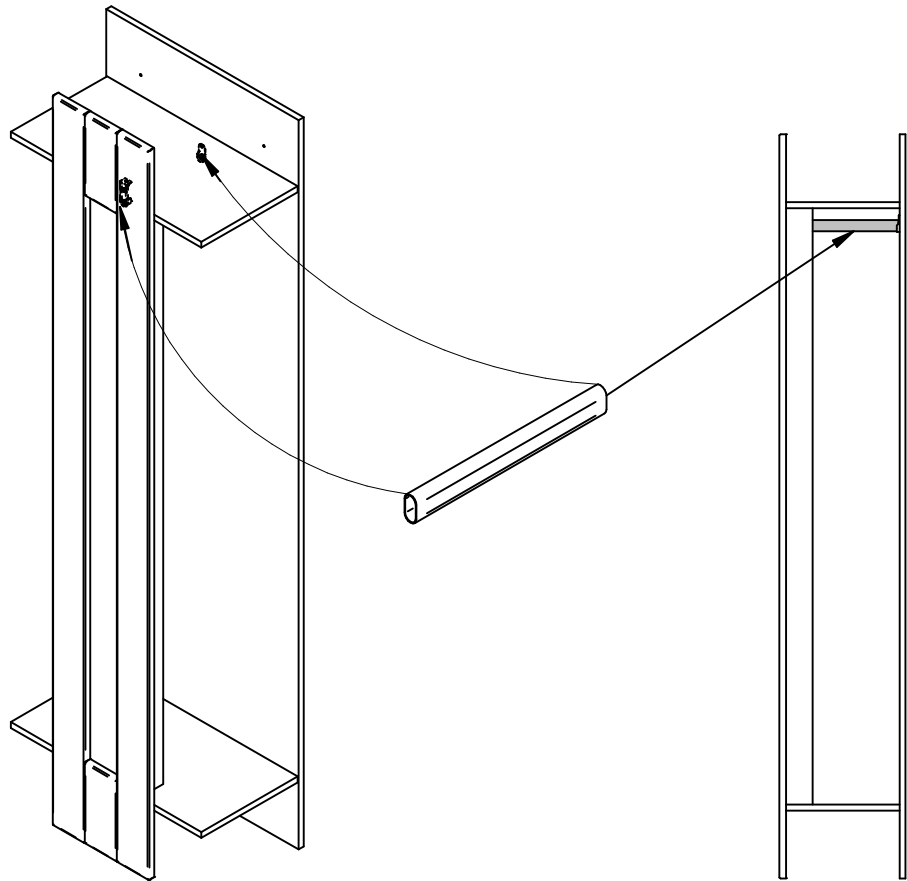
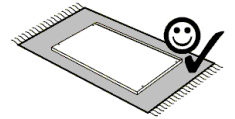
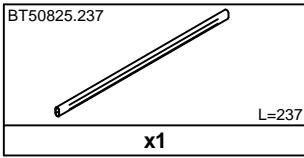


12.

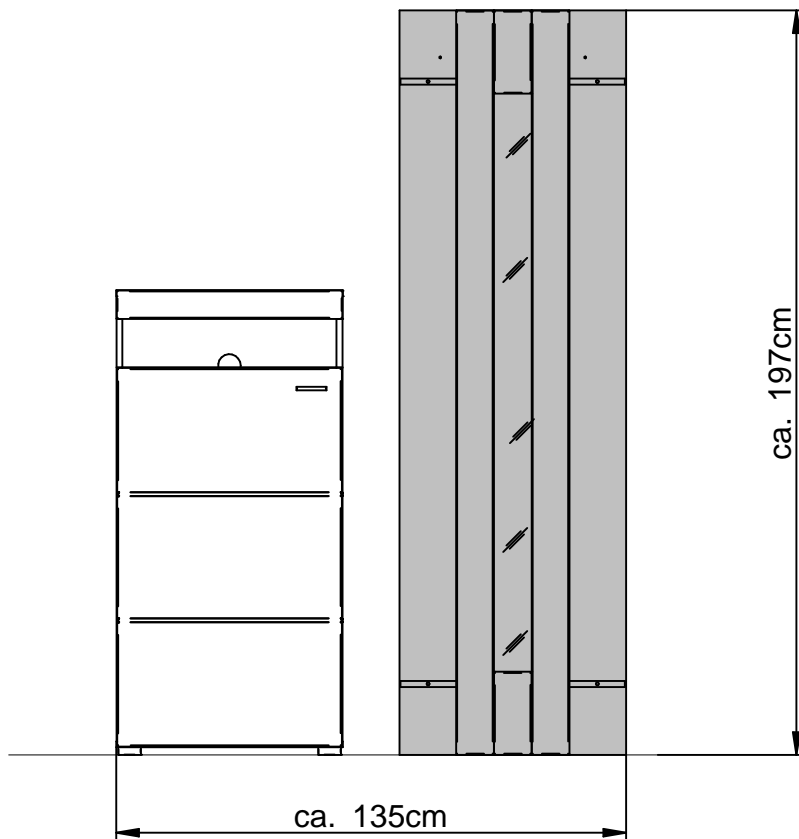
MM1001	MM1007	BT50244.xxx
		
Ø7,7x45	4mm	Ø20
x6	x1	x4



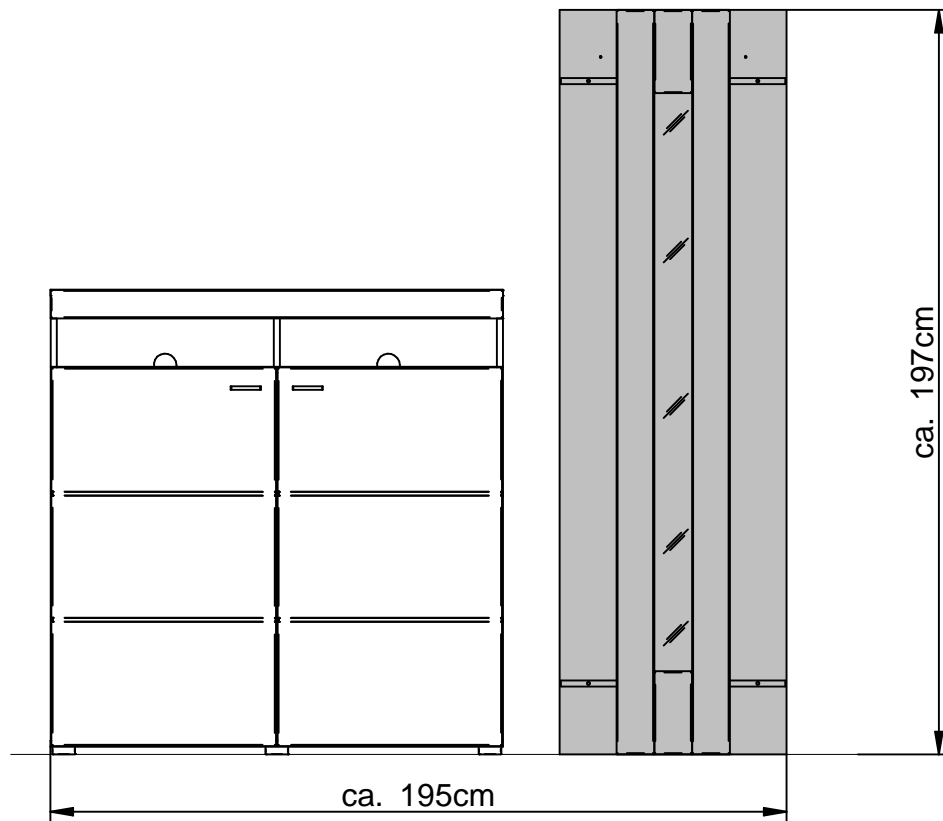
13.



Kombination 1.

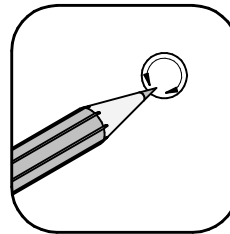
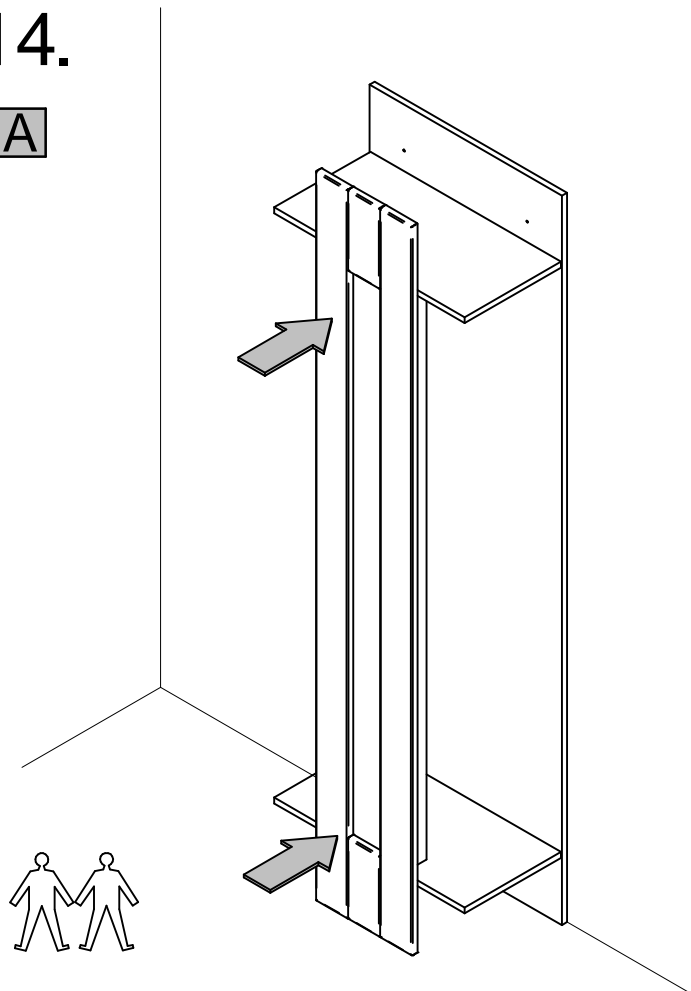


Kombination.2

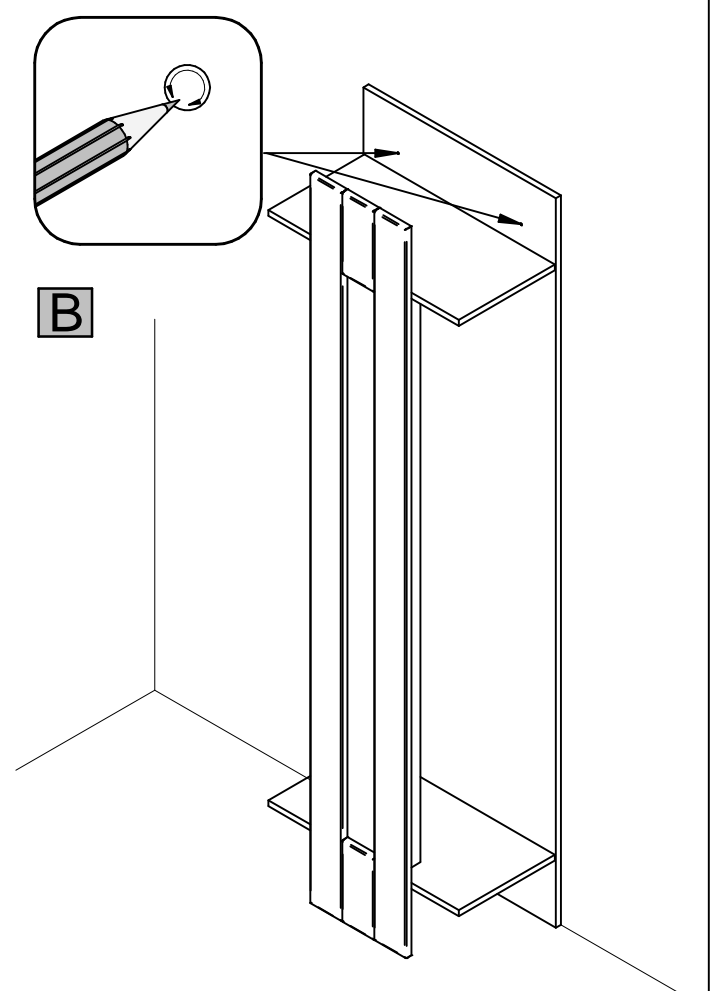


14.

A

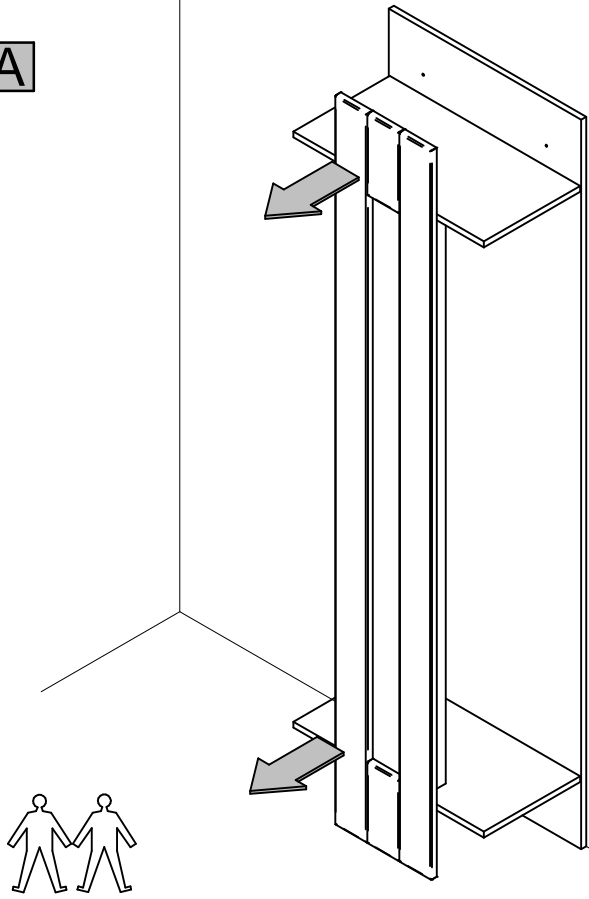


B

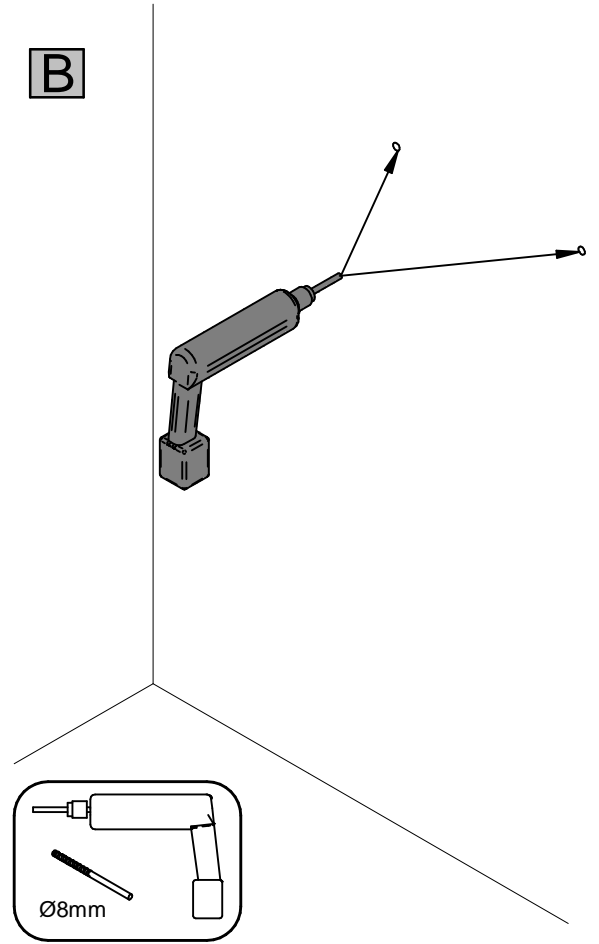


15.

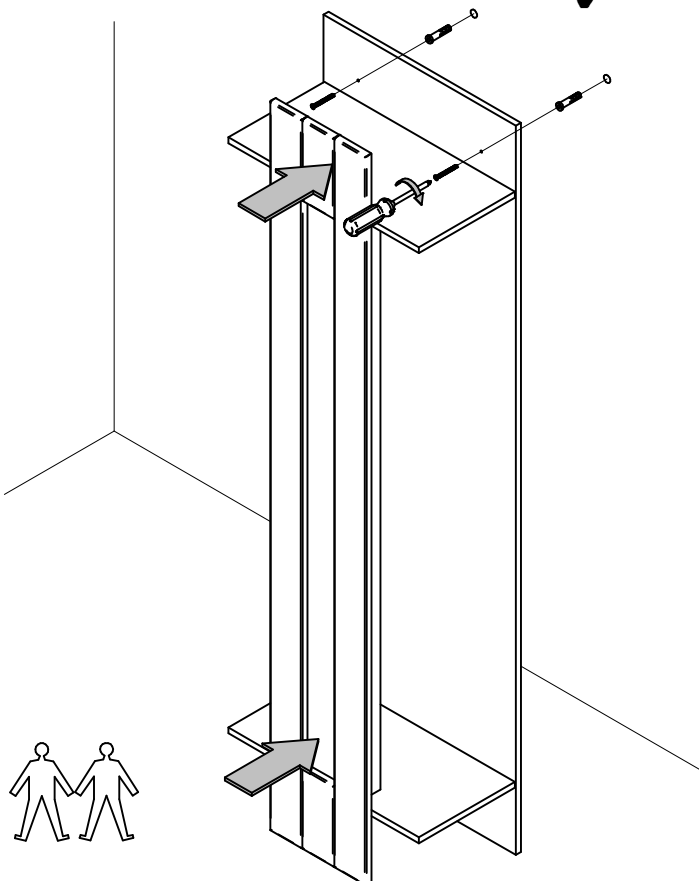
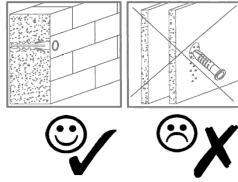
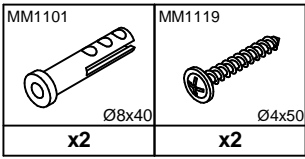
A



B



16.



17.

